

## MAXCELL INSTALLATION SWIVEL

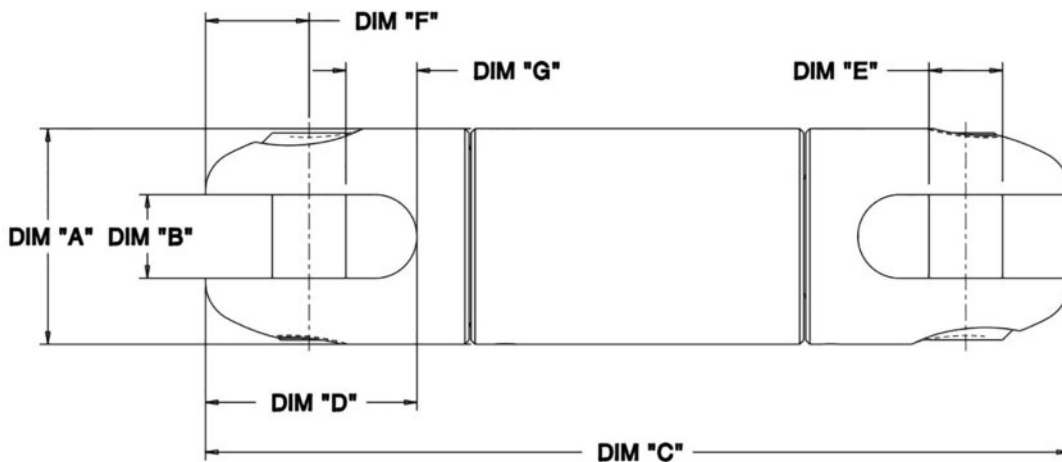
The MaxCell Ball-Bearing Installation Swivels are designed specifically for underground cable pulling applications. Both models (MXCIK11 and MXCSW600) are precision machined from high-strength stainless steel for excellent durability and reusability.

- Reusable - one swivel for multiple installations\*
- Very little maintenance and tooling required for use
- Clevis pin is easily replaceable
- Corrosion resistant construction



Please note: Swivels are not designed to run around bullwheels.

*\*It is recommended that the swivel be inspected before and after each cable pull*



Part Number	Load Capacity	A	B	C	D	E	F	G
MXCIK11	2500 lbs	.875 in	.38 in	4.41 in	1.03 in	.31 in	.53 in	.375 in
MXCSW600	600 lbs	.625 in	.28 in	3.56 in	.79 in	.25 in	.37 in	.295 in